

ESPULSORE LAVORABILE DIN/ISO 6751

WORKABLE EJECTOR PIN DIN/ISO 6751

CODICE / Item no.

KS114

Materiale: Acciaio speciale per lavorazione a caldo, nitrurabile (WAS) resistente al rivestimento fino a 600°C
Material: Special steel for hot working, nitrides (WAS), resistant coating up to 600°C

Esecuzione: Non nitrurato, testa riscaldata a caldo

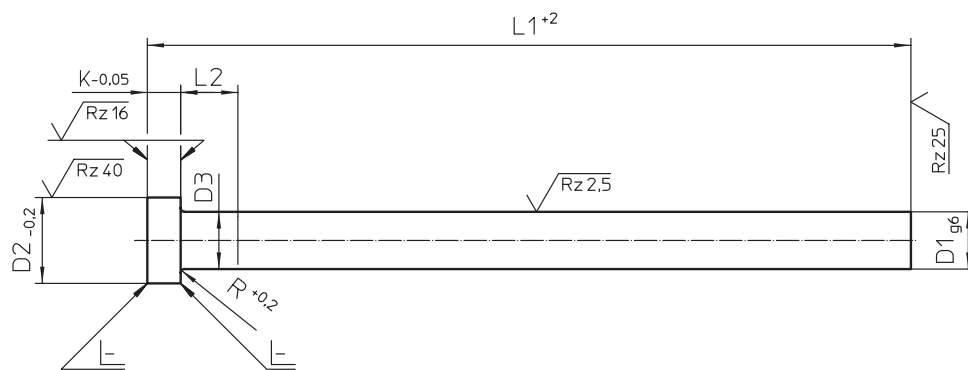
Execution: Do not nitrided, hot head modeled

Durezza in superficie:
 Stelo ≥ 1300 N/mm²

Surface Hardness: Stem ≥ 1300 N/mm²

Su richiesta del cliente vengono forniti espulsori profilati

At the request of the customer profiles are provided knockouts



ESEMPIO DI ORDINE:

10 PEZZI KS114 Ø5,2 x 100

ORDERING - EXAMPLE:

10 PIECES KS114 Ø5,2 x 100

d_{1g6}	$d_{2-0.2}$	d_3	$k_{-0.05}$	$r^{+0.2}$	l_2	$l_1^{+0.2}$																											
1,5	3	$d_1^{+0.03}$	1,5	0,2	≤ 5	100	125	160	200	250	315	400	500	630	800	1000																	
2,0	4		2																														
2,2	5			3													0,3																
2,5																																	
2,7																																	
3,0	6		$d_1^{+0.04}$	5													0,5	≤ 8	100	125	160	200	250	315	400	500	630	800	1000				
3,2	7																																
3,5	8																																
3,7																																	
4,0	10																																
4,2																																	
4,5																																	
5,0																																	
5,2	12	$d_1^{+0.07}$			8	1,0	≤ 20	100	125	160	200	250	315	400	500	630														800	1000		
5,5																																14	
6,0																																	
6,2			16																														
6,5																																	
7,0																																	
8,0																																	
8,2			18	$d_1^{+0.1}$													10	1,0	≤ 25	100	125	160	200	250	315	400	500	630	800			1000	
8,5																																	22
9,0																																	
10,0	24																																
10,2																																	
10,5																																	
11,0																																	
12,0	26	10			1,0	1,0	≤ 32	100	125	160	200	250	315	400	500	630														800	1000		
12,2																																	
12,5																																	
14,0																																	
16,0																																	
18,0																																	
20,0																																	
25,0																																	
32,0																																	